



Mirror Dash Camera P12 Pro Max



USER MANUAL

Thank you for choosing our product. If you have any questions,
please contact us at support@pelsee.com.



Dear Customer,

Thank you for selecting **Pelsee** as your preferred brand!

We sincerely hope that you will enjoy using our product as much as we do.

If you happen to encounter any issues while using the product, or if you have any ideas on how we can enhance it, please don't hesitate to get in touch with us. You can contact us through our official website at

www.pelsee.com or by emailing us at **support@pelsee.com**.

Our dedicated support team will be delighted to help you find a solution that meets your satisfaction as quickly as possible.

**Yours Sincerely,
Pelsee Team**

SAFETY PRECAUTIONS

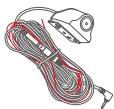
To prevent injury or damage, please read and follow these safety precautions:

1. Read and understand the user manual before using the product and keep it safe for future reference.
2. Only use the original accessories provided by the manufacturer.
3. Remove the protection film from the LCD display and lenses before using the product.
4. DO NOT try to disassemble, alter or repair the product yourself. Please ask for the help from the manufacturer or similarly qualified person in order to avoid a hazard. After repairing, please do a safety check to ensure that the product is working properly.
5. This product must not be placed in a location that may affect the deployment of air bags, and must not obstruct the driver's view.
6. If there is a malfunction or abnormality, such as smoke or strange odor, please stop using the product immediately, then cut off the power supply and contact us.
7. NEVER install the unit in the place where is exposed to the direct sunlight or extremely high temperature. The operating temperature of this product ranges from -10°C (14°F) to 60°C (140°F).
8. Drive safe! NEVER operate the product when you are driving to avoid a traffic accident caused by distraction. Be sure to park your vehicle in a safe place before operating.
9. This product must be securely mounted before driving.

IN THE BOX



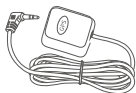
Mirror Dash Camera



Rear Camera Kit



Car Charger



GPS Module



Rubber Strap x4



Adhesive Pad x2



Easy Pry Tool



Screws



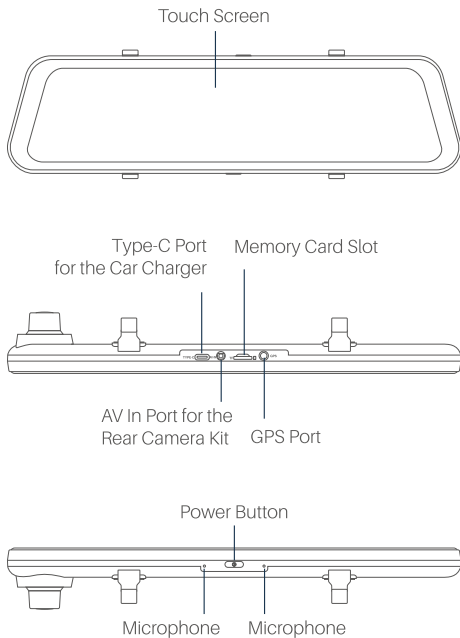
Cleaning Cloth

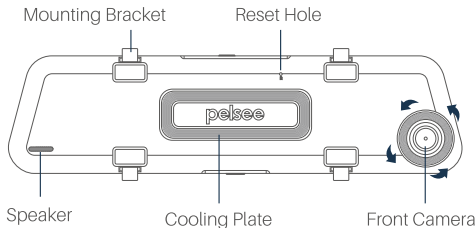


User Manual

KNOW YOUR MIRROR DASH CAMERA

Dash Cam

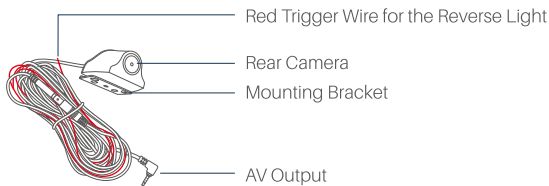




Caution:

When the dash camera is in operation, the cooling plate may become hot due to heat dissipation. Allow it to cool down before attempting to touch it.

Rear Camera Kit



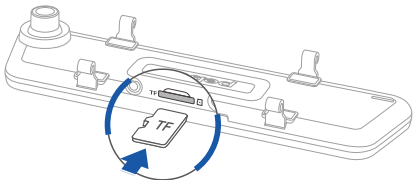
INSTALLATION OF YOUR DASH CAMERA

IMPORTANT:

- ① For optimal results, we recommend professional installation.
- ② Please ensure to turn off the engine of your vehicle before proceeding with the installation.

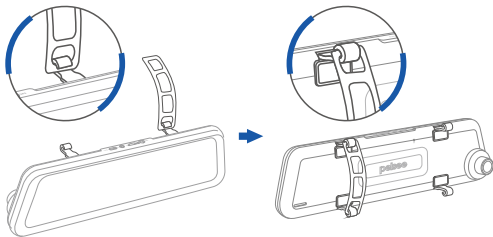
Step 1:

Insert a memory card (should support up to 256GB and be a class 10 or higher speed card) into the dash camera.



Step 2:

Use the rubber straps to mount the dash camera on your original rearview mirror.



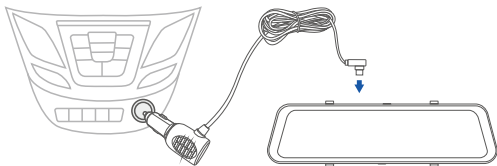
Tip:

If you notice a slight shaking of the dash camera after installation, please consider selecting a different attaching point.



Step 3:

Connect the Type-C port of the car charger to the dash camera, then plug the other end of the car charger into the cigarette lighter receptacle in your vehicle.



Tip:

The USB port on the car charger can also supply power to your mobile device while it's plugged into the cigarette lighter receptacle.

Step 4:

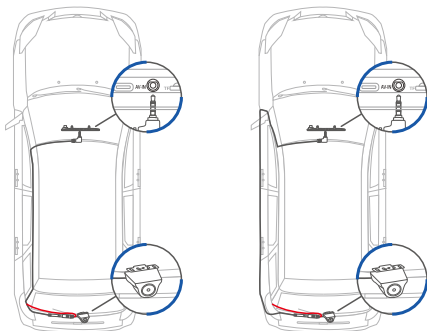
Connect the AV output port of the rear camera kit to the dash camera, then carefully route the cable through the vehicle to its rear section.

Step 5:

Set the vehicle in reverse gear, then identify the wire that feeds the **Reverse Light** from the rear light cluster. Tie the **Red Trigger Wire** with the positive terminal of the correct wire.

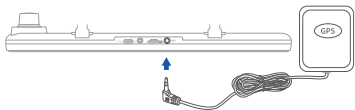
Step 6:

Attach the rear camera securely to the back of your vehicle with the 3M adhesive pad or the screws.



Step 7:

Insert the GPS module into the dash camera and attach it in a suitable location with the letters **GPS** facing upwards.



Different icons on the screen:

📍 : GPS module inserted, insufficient satellites found.

📍 : Enough Satellites Searched

Step 8:

Start the engine to verify if the installation has been done correctly.

USE YOUR MIRROR DASH CAMERA

1. Power On/off

Option 1:

The dash camera will automatically power on when you start the engine and turn off when you stop the engine.

Option 2:

When the dash camera is off, just press the power button once to switch it on; when the dash camera is already on, press and hold the power button for 3 seconds to turn it off.

Tip:

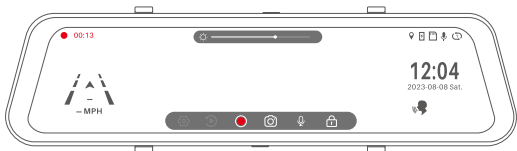
After powering on, please navigate to  > **Format** to format your memory card.

2. Screen On/Off

To turn off the camera screen, press the power button once while the camera is on. When the camera is in sleep mode, press this button again or touch the screen to wake it up.

3. Recording Interface

After powering on and card formatting, the camera will automatically start recording videos. By default, each video's length is set to 1 minute, and when the card has no remaining capacity, the oldest video will be overwritten by the latest video in a continuous loop.



- | | | | |
|--------------------------|------------------------------|-------|-----------------------------------|
| ● | Recording standard video | 00:13 | Video Length |
| 📍 | GPS Status | 🔋 | Power Status(No built-in battery) |
| 📄 | Card Status | 🎤 | Microphone Status |
| 🕒 | Selected Video Length Option | 🚦 | GPS Speed(MPH by default) |
| 12:04
2023-08-08 Sat. | Date and Time | 🗣️ | Voice Control Enabled |

Tap  to start or stop video recording.

Tap  to access the camera settings.

Tap  to view saved videos and images.

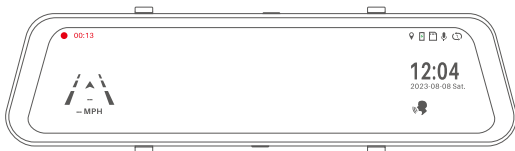
Tap  to capture a photo.

Tap  to enable or disable audio recording.

Tap  to lock or unlock the current video during recording.

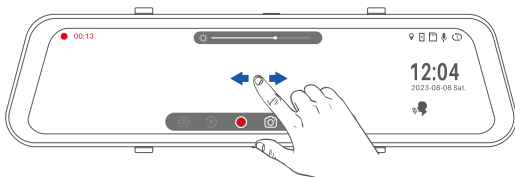
Slide  to adjust the display brightness.

Wait for 5s, the display will show like below.

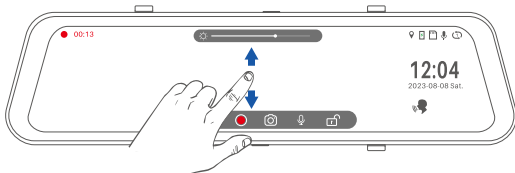


* Gestures in the recording interface



To switch among the views from the front camera, the rear camera, and both cameras, just slide your finger left or right on the touch screen.

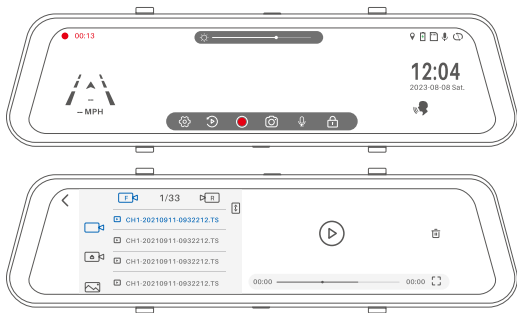


To view the lens' full field of view of the front camera, simply swipe upward or downward on the touch screen. This function is not available when both cameras view are displayed.






4. Check and Delete Videos and Photos

Tap , then tap  to access the recorded videos and photos.






Tap  and  to watch the standard videos recorded by the front camera.

Tap  and  to view the locked videos recorded by the front camera when there is a collision in driving or parking, as well as the videos manually locked by tapping  on the recording interface.


Tap  and  to check the photos taken by the front camera.

Tap  and  to watch the standard videos recorded by the rear camera.

Tap  and  to view the locked videos recorded by the rear camera when there is a collision in driving or parking, as well as the videos manually locked by tapping  on the recording interface.

Tap  and  to check the photos taken by the rear camera.

Tap the selected video or  to playback the video.

Tap  to enter full-screen mode.

Tap  to delete the selected file.

* How to transfer the files?

Option 1:


To transfer files, first remove the memory card from the mirror dash camera. Then, connect the memory card to a computer using a card reader (not included).

Option 2:

To access your camera files, tap on **Camera File** on the homepage of the **Pelsee Cam App**. From here, you can view all your videos and photos, and choose a file to delete or download.

CONNECT THE DASH CAM WITH THE APP

Step 1:

Download and install the **Pelsee Cam App** on your mobile device by scanning the QR code below or searching for **Pelsee Cam** on Google Play™/App Store™. Alternatively, you can go to  > **About** to scan the QR code to download and install the App.



or



Step 2:

Ensure that the dash camera is turned on and mobile device is within 5 meters of the camera.

Step 3:

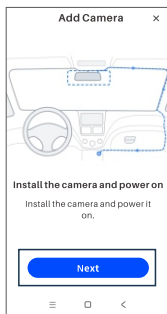
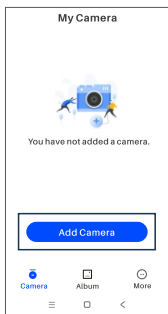
Navigate to  > **WiFi On/Off** to enable the WiFi of your dash camera.

WiFi On/Off

NO

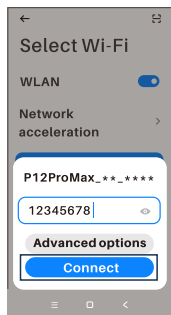
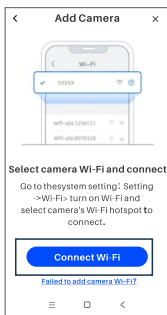
Step 4:

Open the **Pelsee Cam** App and grant the necessary permissions. Tap on **Add Camera** to check the wizard and start connecting.



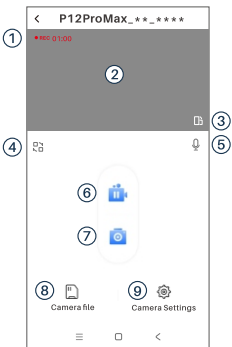
Step 5:

Tap on **Connect Wi-Fi** and go to the **Settings > WLAN** of your mobile device to search for the **P12ProMax_**_******. Enter the password **12345678** to complete the connection process.



Step 6:

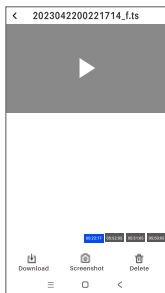
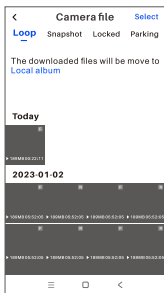
Return to the App and wait for the connection. Tap on **Access Camera** to enter the homepage.



- 1 Recording Status
- 2 Live View
- 3 Orientation (Portrait or Landscape)
- 4 Switch Front and Rear Cameras' Views
- 5 Audio On/Off
- 6 Start/Stop Recording
- 7 Take Photo
- 8 Recorded Videos and Captured Images
- 9 Camera's Detailed Settings


* Camera File

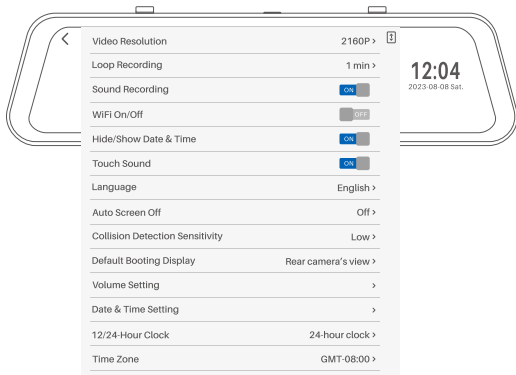
To view and manage your camera files, tap on **Camera File** on the homepage. From here, you can see all your videos and photos, and select a file to delete or download.

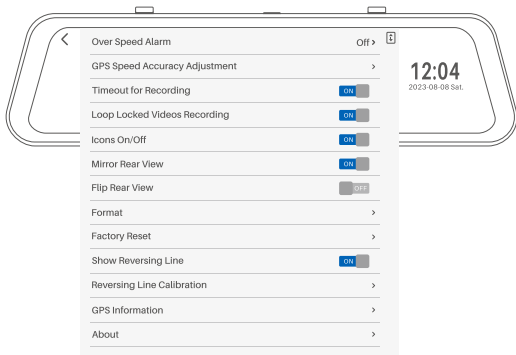


- ① **Loop:** Standard Videos from the front and rear cameras
Snapshot: Captured Photos from the front and rear cameras
Locked: Locked Videos from the front and rear cameras
Parking: Videos Recorded when Parking (An extra hardwire kit is needed)
F: Videos or Photos from the front camera
R: Videos or Photos from the rear camera
- ② Tap **Select** on the upper right corner to select the file(s) to download it/ them into your mobile device or delete the file(s).
After downloading the file(s), you can edit or directly share it(them) to social media.

SETTINGS

Once you have stopped the video recording, tap  to enter and adjust the settings of your dash camera.





① Video Resolution

Change the front camera resolution by selecting one of the following options: **2160P**, **1440P**, or **1080P**.

② Loop Recording

Change the recording time of each video. The choices include **1 min**, **2 mins**, and **3 mins**, with the default setting being 1 minute.

③ Sound Recording

Enable or disable the audio while recording videos.

④ WiFi On/Off

Enable or disable the WiFi of the dash camera.

⑤ Auto Hide Date & Time

When you enable this option, the date and time on the recording interface will disappear after a while. If you have disabled this option, the date and time will be always displayed.

⑥ Touch Sound

Turn on or turn off the sound when tapping the touch screen.

⑦ Language

Set the language of the dash camera.

⑧ Auto Screen Off

Set the time for the dash camera to enter sleep mode after a certain period of inactivity. The available options include **Off**, **1min**, **2mins** and **3 mins**.

⑨ Collision Detection Sensitivity

Adjust the G-sensor sensitivity for collision detection during driving. You can select from **Very Low**, **Low**, **Medium**, **High**, and **Off** as needed based on your preferences. If you select **High(low)**, the camera would automatically lock the current video when your car encounters a **minor(severe)** collision. When this occurs, a flashing yellow dot will appear on the upper-left corner, indicating that the camera is locking the current video to prevent it from being overwritten.

⑩ Default Booting Display

Set the default camera view when the dash camera powers on. There are three available options to choose from: **Front camera's view**, **Rear camera's view**, and **Both cameras' view**.

⑪ Volume Setting

Turn up or down the volume of the system as needed.

⑫ Date & Time Setting

Set the date and time of the dash camera. You can also simply tap the date and time on the recording interface to adjust the date and time settings.

⑬ 12/24-Hour Clock

Set the clock format for the time of the dash camera.

14 Time Zone

Select your time zone for the dash camera.

15 Over Speed Alarm

You can set a speed limit to receive reminders about your speed.

16 GPS Speed Accuracy Adjustment

If the GPS speed indicated on the screen is not highly precise, you have the option to manually fine-tune it here.






17 Timeout for Recording

When you enable this option, the dash camera will automatically return to the recording interface if you remain on a specific page without any operation for over 1 minute.

18 Loop Locked Videos Recording

Once this option is enabled, the dash camera will overwrite the oldest locked videos with the latest locked videos when the memory card becomes full. If you do not enable this option, and the memory card has too many locked videos, you will need to manually delete some of them to free up space.

19 Icons On/Off

Configure whether to display or hide the icons      on the upper right corner of the recording interface.

20 Mirror Rear View

Mirror the rear camera view horizontally to change the orientation between leftward and rightward.

21 Flip Rear View

Flip the rear camera view vertically to change the orientation between upward and downward.

22 Format

Format your memory card.

23 Factory Reset

Restore the dash camera to the factory settings.

24 Show Reversing Line

Choose to show or hide the reversing line when the car is in reverse. The reversing line will only appear if you have connected the red wire of the rear camera kit to your vehicle's reverse light.

25 Reversing Line Calibration

To adjust the accuracy of the reversing line, tap the dots to move the line upward and downward, customizing the area for reversing. This option will appear once you have connected the rear camera to the mirror dash camera.

26 GPS Information

This option is only accessible when the GPS module is installed. Once installed, you can check detailed GPS information here.


27 About

Get the QR code for downloading the App; check the software version, device model, WiFi name of the dash camera and the password.

NOTE:

If you installed a hardwire kit (sold separately) for the dash cam, the **Parking Mode** and the **Time-lapse Recording** options will be available. Please contact Pelsee customer service team for more information.

VOICE CONTROL

This function is enabled by default. The icon  is displayed on the lower right corner of the dash camera and the camera can be controlled via the voice commands. Touch the icon to check the voice commands.

open screen, show front camera, open recording, turn off display, show rear camera, turn off recording, take picture, and lock the video.

CHECK THE GPS DATA

Option 1: Via the DVPlayer

Step 1:

Visit <https://dvplayer.net/setup.html> to download DVPlayer onto your computer.

Step 2:

Install DVPlayer on your computer and run the application. To protect your privacy, please click **About > Product Registration** to enter the provided **FREE** registration code (the same as the **Serial Number** on the back of the your dash camera) and your email address to register your dash camera. This registration code is exclusive for your use of the App and your product, and it is entirely free of charge without any future costs.

Tip:

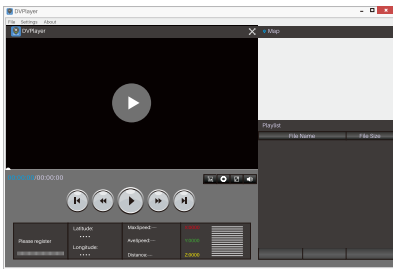
Each registration code can only be used on one Windows computer and one Mac computer. If you initially register on a Windows computer and later want to switch to a different Mac computer, follow these steps: Go to **About** and click on **Delete Registration** to remove the code from the Windows computer. Then, you can enter the same code on the Mac computer to register your dash camera on that device.

Step 3:

Transfer the videos from the dash camera to your computer using a card reader.

Step 4:

Launch **DVPlayer** and open the video you want to play.



Step 5:

Click **Settings** on the DVPlayer application to set **Video Playback mode**, **Language**, **Map**, **Speed Unit**, **Track linking** and **Auto Play Next**.

Option 2: Via the Pelsee Cam

Step 1:

Please download and install the Google Maps app on your mobile phone.


Step 2:

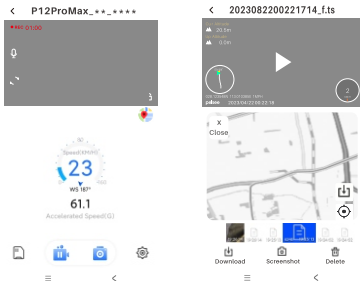
Ensure that you have installed the GPS module on the mirror dash camera.

Step 3:

Open the **Pelsee Cam** App to see the live view. You can also access real-time GPS speed and direction in the lower part of the homepage.

Step 4:

Tap  and choose a video to review. You'll be able to view the detailed GPS route.




SPECIFICATIONS

Resolution(Front Camera)	4K
Resolution(Rear Camera)	2.5K
Video Format	TS
Photo Format	JPG
Memory Card	Support up to 256GB (not included)
Input	5V/2.5A
Operating Temperature	-10°C(14°F)-60°C(140°F)
Storing Temperature	-20°C (-4°F) to 70°C (158°F)

TROUBLESHOOTING GUIDE

If you encounter any issues or have any questions, please don't hesitate to contact us at support@pelsee.com. We are here to assist you with the right solution, whether it involves sending you a tutorial video or providing a new replacement if necessary. Your satisfaction is our priority, and we are committed to ensuring that you have a positive experience with our product.

1. Why does my screen freeze or become unresponsive?

- * Please check if the issue is caused by the memory card. Remove the memory card and see if the problem persists. If it is the card, consider replacing it.
- * Try to power off and then power on the dash camera.
- * Use a pin into the reset hole to reboot the dash camera.
- * Go to  > **Factory Reset** to restore the dash camera to the factory settings.

2. The dash camera can't power on or restarts repeatedly.

- * Check if both ends of the car charger are properly connected and in good contact.
- * Ensure you are using the original car charger.
- * Verify if the issue is related to the memory card. Remove the memory card and check for any changes. If necessary, replace the card.


3. The image view from the cameras is blurry.

- * Confirm whether the protective film on the lenses have been removed. If not, remove them.
- * Wipe the lenses with a clean cloth or other material to prevent it from getting dirty.
- * Please ensure that the windshield is clean and free from any dirt; and make sure there are no scratches on the film covering your windshield.

4. What should I do if the screen flickers?

- * Swipe on the touch screen to check if the flickering is from the front or rear camera.
- * For rear camera flickering, ensure the AV connector is securely plugged in. Try unplugging and re-plugging it.
- * If the problem remains with the rear camera or is from the front camera, contact us for a replacement.

5. The collision detection is too sensitive or not sensitive enough.

- * Please go to  > **Collision Detection Sensitivity** to set the sensitivity level according to your preference.

6. How can I activate the Parking Mode function of the Time-lapse recording function of the dash camera?

- * Install a hardwire kit (sold separately) to enable these two features for your dash camera.

FCC CAUTION

Any Changes or modifications not expressly approved by the party responsible for compliance could void the user's authority to operate the equipment.

This device complies with part 15 of the FCC Rules. Operation is subject to the following two conditions:

- (1) This device may not cause harmful interference, and
- (2) this device must accept any interference received, including interference that may cause undesired operation.

Note:

This equipment has been tested and found to comply with the limits for a Class B digital device, pursuant to part 15 of the FCC Rules.

These limits are designed to provide reasonable protection against harmful interference in a residential installation. This equipment generates, uses and can radiate radio frequency energy and, if not installed and used in accordance with the instructions, may cause harmful interference to radio communications. However, there is no guarantee that interference will not occur in a particular installation.

If this equipment does cause harmful interference to radio or television reception, which can be determined by turning the equipment off and on, the user is encouraged to try to correct the interference by one or more of the following measures:

- Reorient or relocate the receiving antenna.
- Increase the separation between the equipment and receiver.
- Connect the equipment into an outlet on a circuit different from that to which the receiver is connected.
- Consult the dealer or an experienced radio/TV technician for help.

FCC Radiation Exposure Statement:

This equipment complies with FCC radiation exposure limits set forth for an uncontrolled environment. This equipment should be installed and operated with minimum distance 20cm between the radiator & your body. This transmitter must not be co-located or operating in conjunction with any other antenna or transmitter.

ISED Statement

This device complies with Industry Canada license-exempt RSS standard(s).

Operation is subject to the following two conditions: (1) This device may not cause interference, and (2) This device must accept any interference, including interference that may cause undesired operation of the device.

The digital apparatus complies with Canadian CAN ICES-3 (B)/NMB-3(B).

Le présent appareil est conforme aux CNR d'Industrie Canada applicables aux appareils radio exempts de licence. L'exploitation est autorisée aux deux conditions suivantes:

(1) l'appareil ne doit pas produire de brouillage, et (2) l'utilisateur de l'appareil doit accepter tout brouillage radioélectrique subi, même si le brouillage est susceptible d'en compromettre le fonctionnement.

L'appareil numérique du CIEM conforme canadien peut -3 (b) / nmb -3 (b).

This device meets the exemption from the routine evaluation limits in section 2.5 of RSS 102 and compliance with RSS 102 RF exposure, users can obtain Canadian information on RF exposure and compliance.

Cet appareil est conforme à l'exemption des limites d'évaluation courante dans la section 2.5 du CNR - 102 et conformité avec RSS 102 de l'exposition aux RF, les utilisateurs peuvent obtenir des données canadiennes sur l'exposition aux champs RF et la conformité.

This equipment complies with Canada radiation exposure limits set forth for an uncontrolled environment.

This equipment should be installed and operated with minimum distance 0cm between the radiator & your body.

Cet équipement est conforme Canada limites d'exposition aux radiations dans un environnement non contrôlé.

Cet équipement doit être installé et utilisé avec une distance minimale de 0 cm entre le radiateur et votre corps.

CAUTION

RISK OF EXPLOSION IF BATTERY IS REPLACED BY AN INCORRECT TYPE.
DISPOSE OF USED BATTERIES ACCORDING TO THE INSTRUCTIONS.

 The symbol indicates DC voltage



RECYCLING

This product bears the selective sorting symbol for Waste electrical and electronic equipment (WEEE). This means that this product must be handled pursuant to European directive 2012/19/EU in order to be recycled or dismantled to minimize its impact on the environment. User has the choice to give his product to a competent recycling organization or to the retailer when he buys a new electrical or electronic equipment. This product can be used across EU member states.

EU Compliance Statement: Shenzhen Vycol-Glint Innovations Technology co., Ltd here by declares that this device is in compliance with the essential requirements and other relevant provisions of the Directive 2014/53/EU.



GLOBAL ONE SOLUTION LTD
Address: 6 rue d'Armaillé 75017 Paris
E-Mail: GstarUK.service@hotmail.com



GLOBAL STAR UK SOLUTION LTD
Address: 7 COPPERFIELD ROAD COVENTRY, WEST
MIDLANDS, ENGLAND UNITED KINGDOM CV2 4AQ
E-Mail: GstarUK.service@hotmail.com

Manufacturer:

Shenzhen Vycol-Glint Innovations Technology co., ltd

Address:

No. 26, Gangsheng Road. Building A, Room 509, Bao'an District,
Shenzhen, Guangdong

V1.02